



RESIDENCE

Jacob House Yieldsheilds, , ML8 4QB

[www.residenceestateagents.co.uk](http://www.residenceestateagents.co.uk)



Viewing by appointment with Residence Hamilton  
T: 01698 444333 | E: [hamilton@residenceestateagents.co.uk](mailto:hamilton@residenceestateagents.co.uk) | A: 34 Cadzow Street, Hamilton, ML3 6DG



RESIDENCE





## 5 Bedrooms | 2 Public Rooms | 3 Bathrooms

An exceptional bespoke self-build villa set within a substantial gated plot, offering luxurious family living, stunning countryside views, and a detached double garage with annex.

Jacob House is a truly outstanding family home situated within the sought-after semi-rural village of Yieldshields, on the outskirts of Carlisle. Occupying a generous private plot with panoramic countryside views, the property is accessed via electric gates and an extensive driveway that comfortably accommodates multiple vehicles.

Finished to an exceptional standard throughout, the accommodation is centred around a stunning reception hall featuring a striking T-shaped grand staircase. The ground floor benefits from underfloor heating beneath stylish tiled flooring and comprises two double bedrooms, one currently utilised as a study/playroom, a contemporary WC, and an elegant lounge with feature fireplace and French doors.

The heart of the home is the impressive open-plan kitchen, dining and family area, perfectly designed for modern living and entertaining. This superb space flows seamlessly into a bright TV room featuring a large skylight and direct access to the rear garden, while a generous utility room is conveniently located off the kitchen.

The upper level offers three further double bedrooms, all with excellent storage, including a luxurious principal suite with en-suite bathroom. A beautifully finished four-piece family bathroom featuring a Jacuzzi bath completes the accommodation.

Externally, the property enjoys extensive gardens, a detached double garage with versatile annex accommodation, a comprehensive security system, and 4kW solar panels.

Combining exceptional craftsmanship, generous living space and a beautiful countryside setting, Jacob House presents a rare opportunity to acquire a truly unique family home.

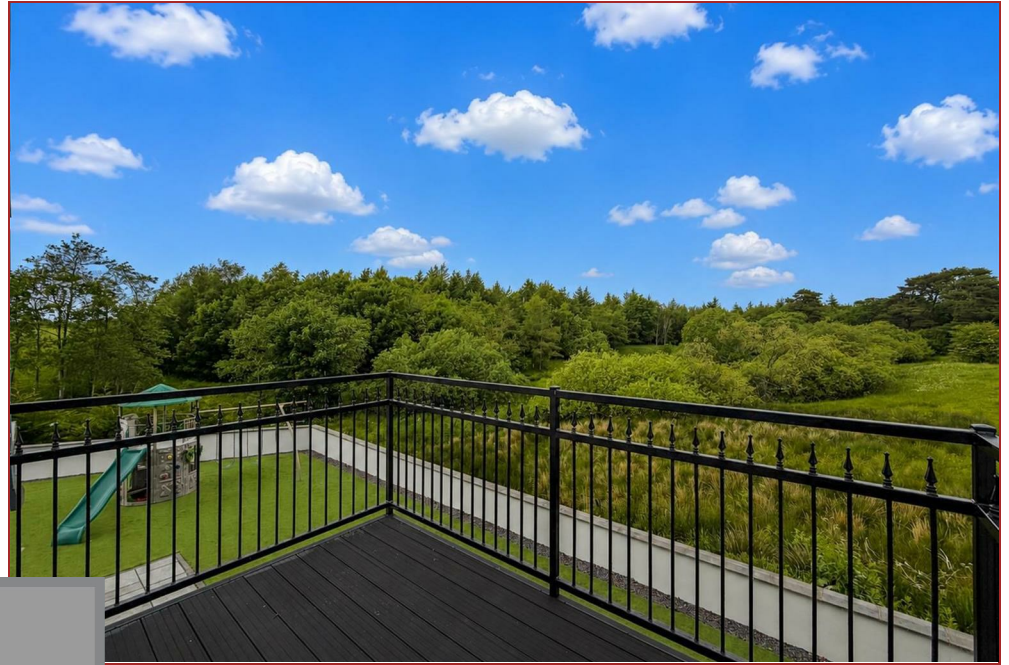


3164.59 sq ft | EER = C



RESIDENCE



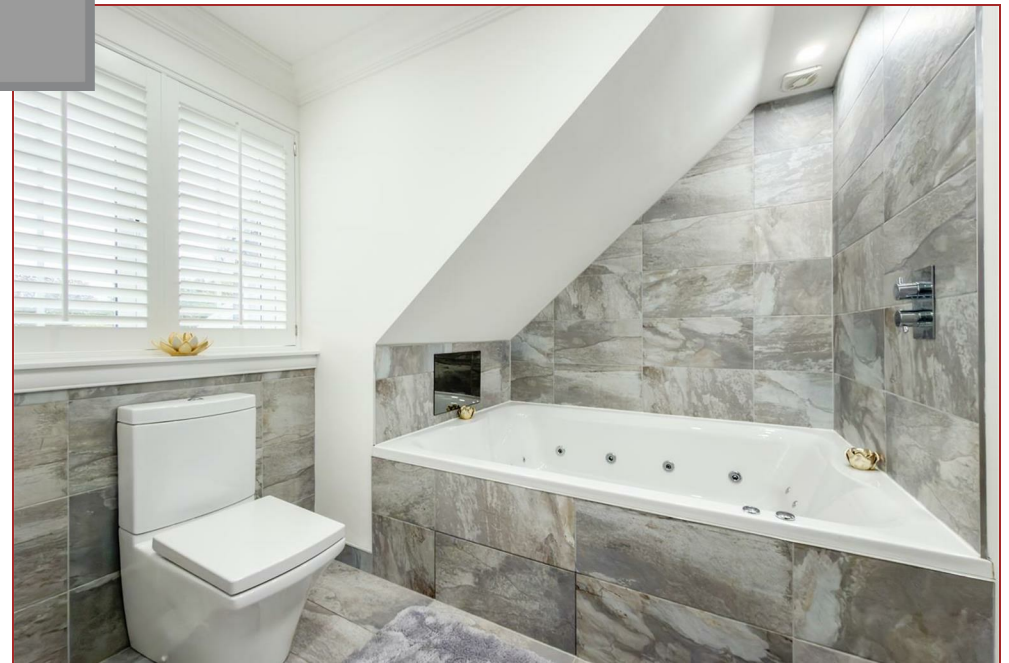


RESIDENCE



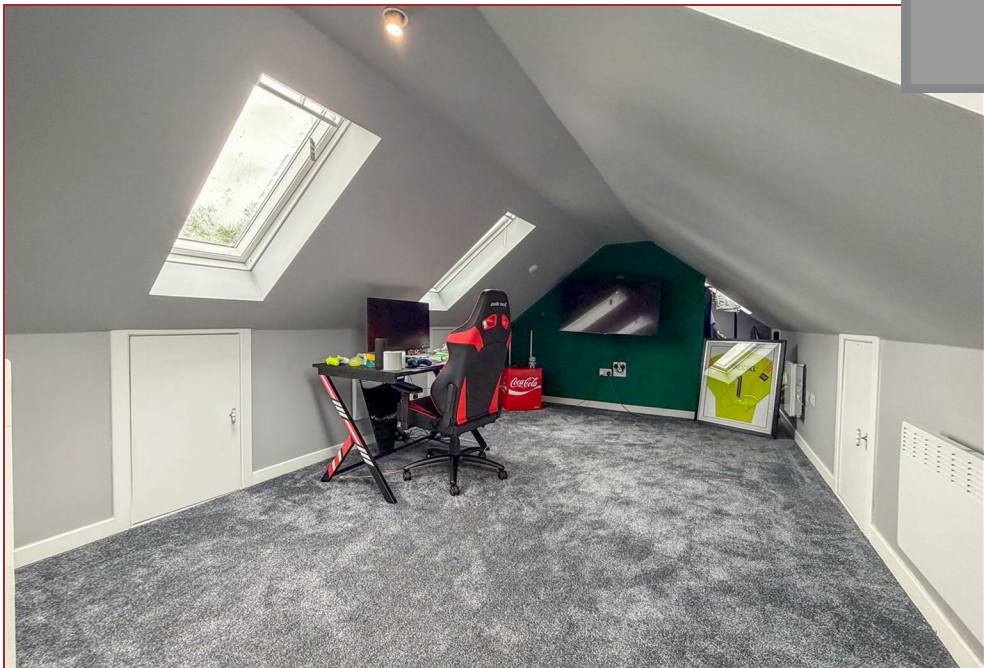


RESIDENCE



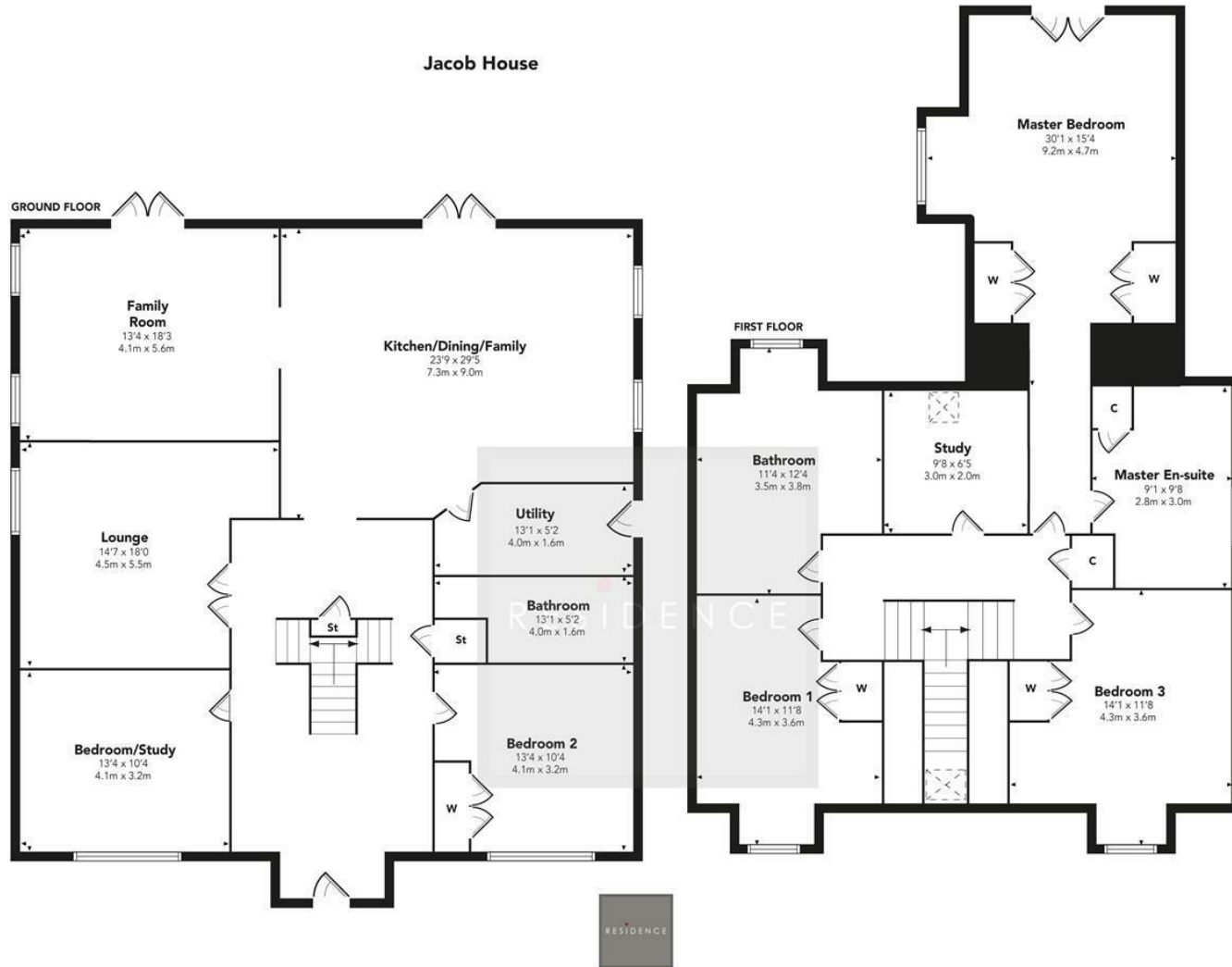


RESIDENCE





# Jacob House



Floor Plan measurements are approximate and are for illustrative purposes only. While we do not doubt the floor plans accuracy, we make no guarantee, warranty or representation as to the accuracy and completeness of the floor plan. You or your advisors should conduct a careful, independent investigation of the property to determine to your satisfaction as to the suitability of the property for your space requirements.

Produced by Plush Plans Ltd

We believe these details to be accurate; however, they do not form any part of a contract. Fixtures and fittings are not included unless specified in the enclosed. Photographs are for general information and it must not be inferred that any item is included for sale with the property. All distances and measurements are approximate. Floorplans may not be to scale and are for illustration purposes only.